

Marlborough

Frieze Masters
October 2 – 6, 2019
Stand F09

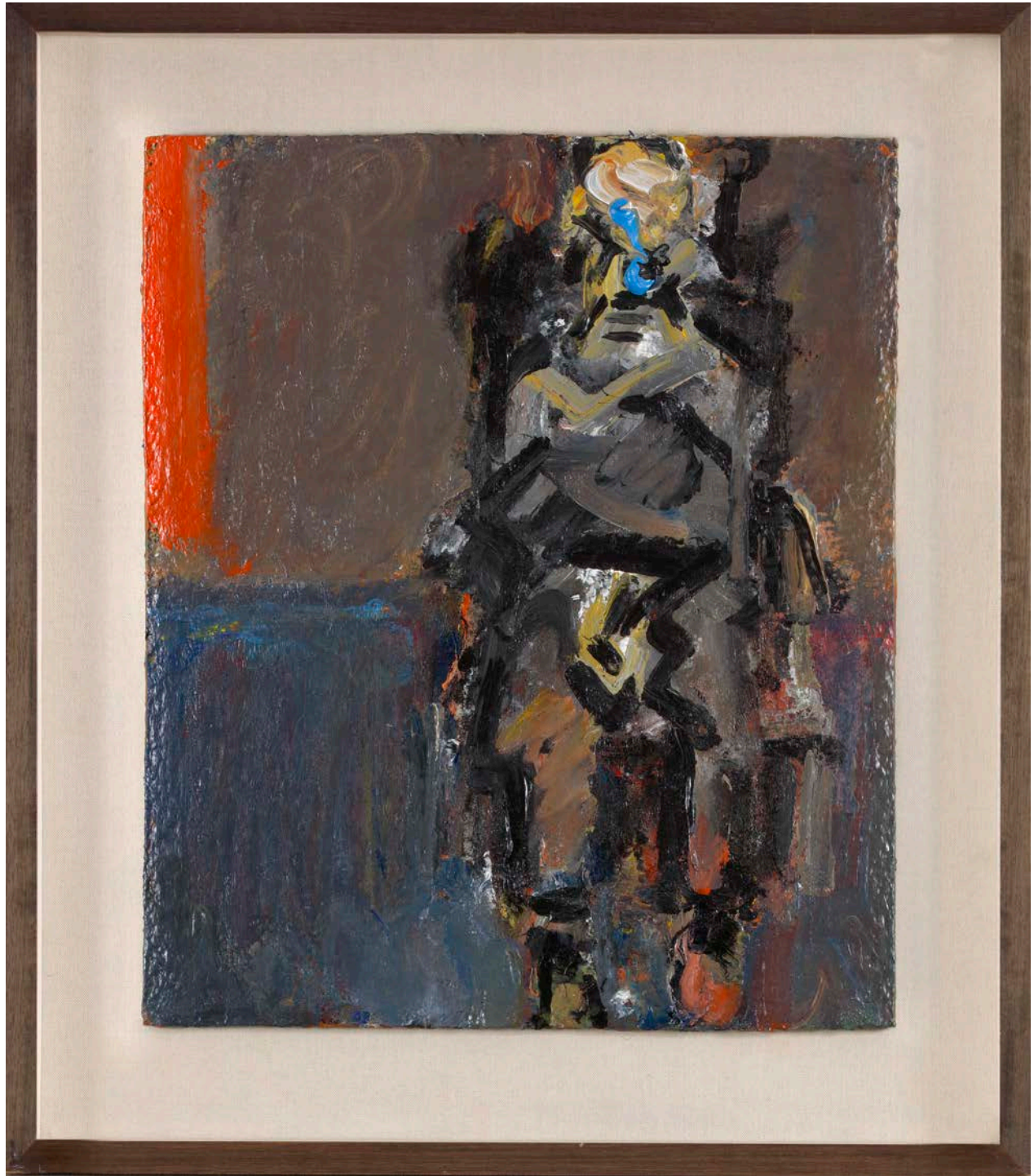
Frank Auerbach | Lucian Freud
Alex Katz | Alice Neel | Celia Paul
Paula Rego | Larry Rivers

Marlborough



Frank Auerbach
Head of Jake, 2006
oil on canvas
18 x 18 in. / 45.7 x 45.7 cm

Marlborough



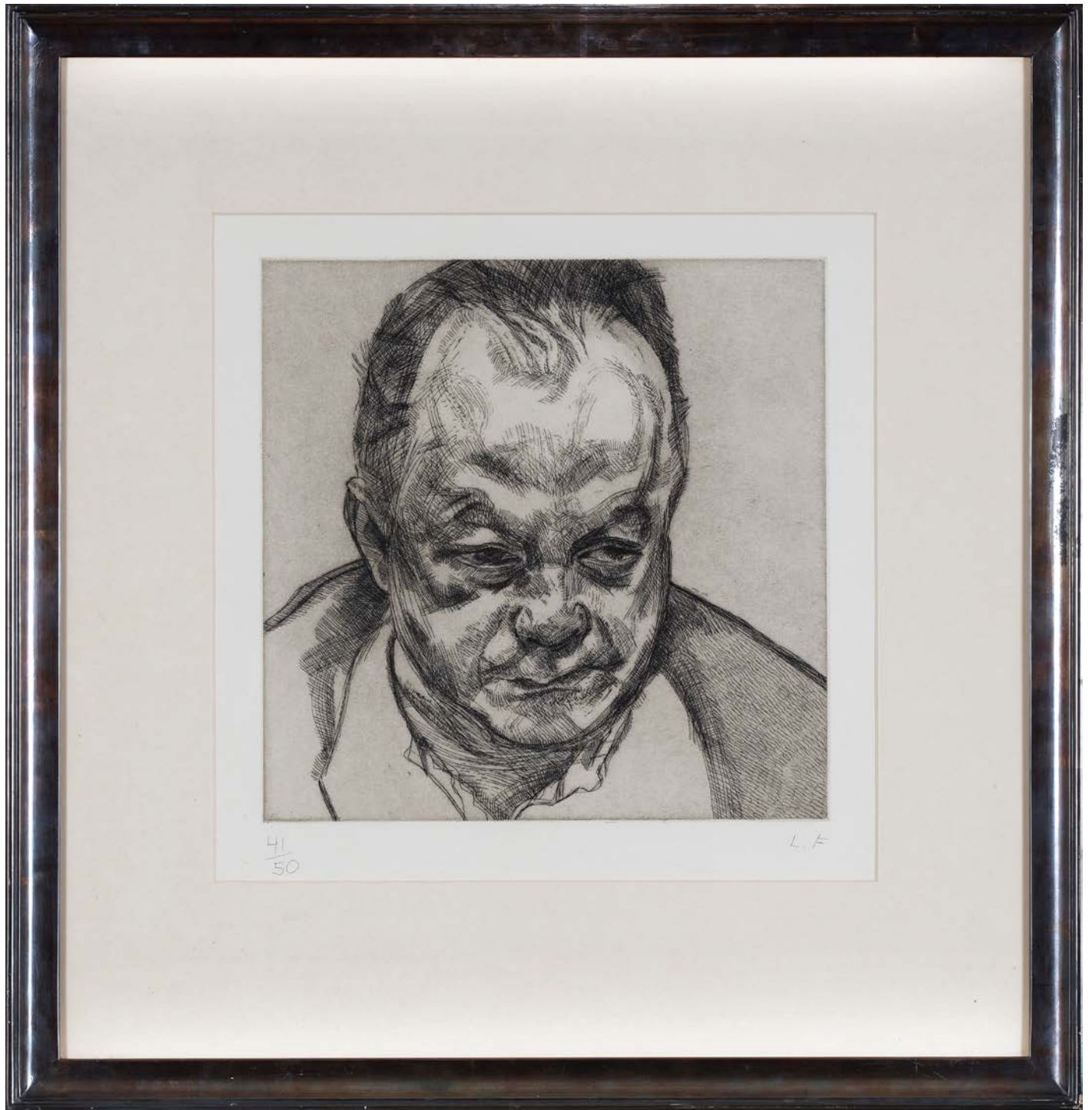
Frank Auerbach
Julia Seated II, 1992
acrylic on board
23 5/8 x 20 1/8 in. / 60 x 51.1 cm

Marlborough



Lucian Freud
Blond Girl, 1985
etching, edition of 50
plate: 27 1/8 x 21 3/8 in. / 69 x 54.2 cm
paper: 35 x 28 3/8 in. / 89 x 72 cm

Marlborough



Lucian Freud
Head of Bruce Bernard, 1985
etching, edition of 50
plate: 11 5/8 x 11 3/4 in. / 29.5 x 30 cm
paper: 20 1/8 x 18 1/2 in. / 51 x 47 cm

Marlborough



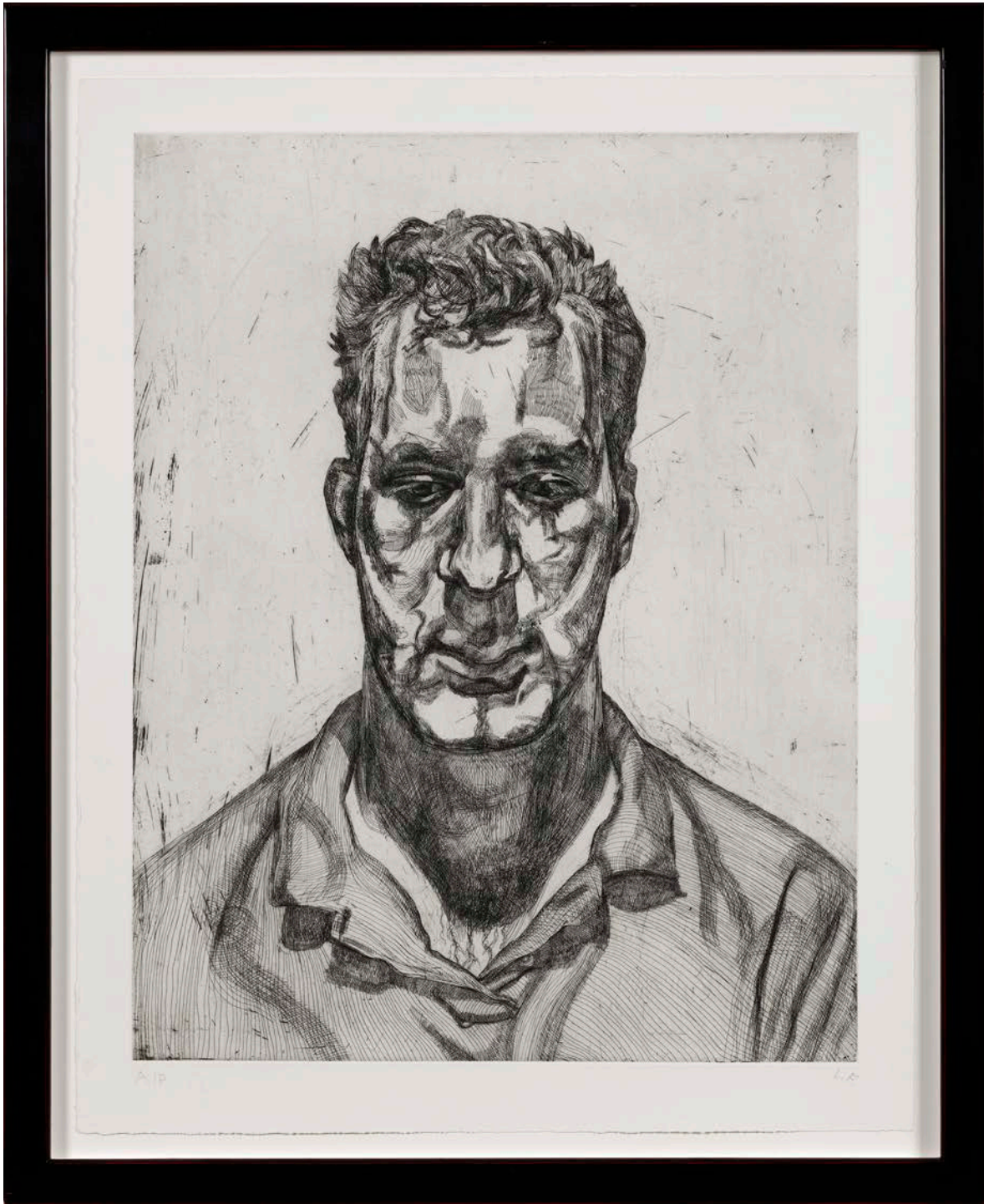
Lucian Freud
Girl Holding her Foot, 1985
etching, edition of 50
plate: 27 1/8 x 21 1/4 in. / 69 x 54 cm
paper: 35 x 28 3/8 in. / 89 x 72 cm

Marlborough



Lucian Freud
Lord Goodman in His Yellow Pyjamas, 1987
etching, edition of 50, each impression colored by the artist in watercolor
plate: 12 1/4 x 15 7/8 in. / 31.1 x 40.3 cm
paper: 18 7/8 x 22 1/8 in. / 48 x 56.1 cm

Marlborough



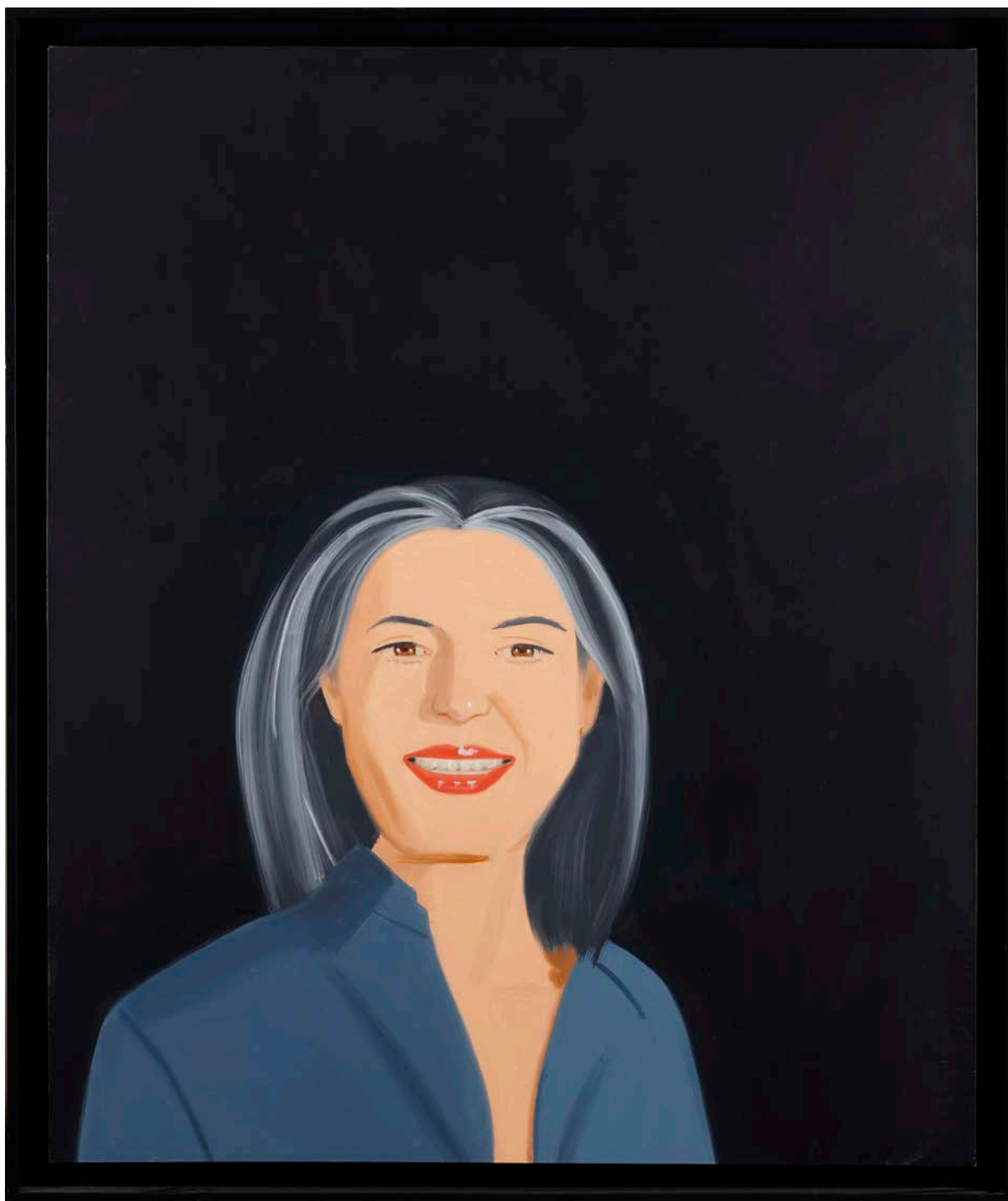
Lucian Freud
Kai, 1991-92
etching, edition of 40
plate: 27 3/8 x 21 1/2 in. / 69.5 x 54.5 cm
paper: 31 1/4 x 25 in. / 79.3 x 63.5 cm

Marlborough



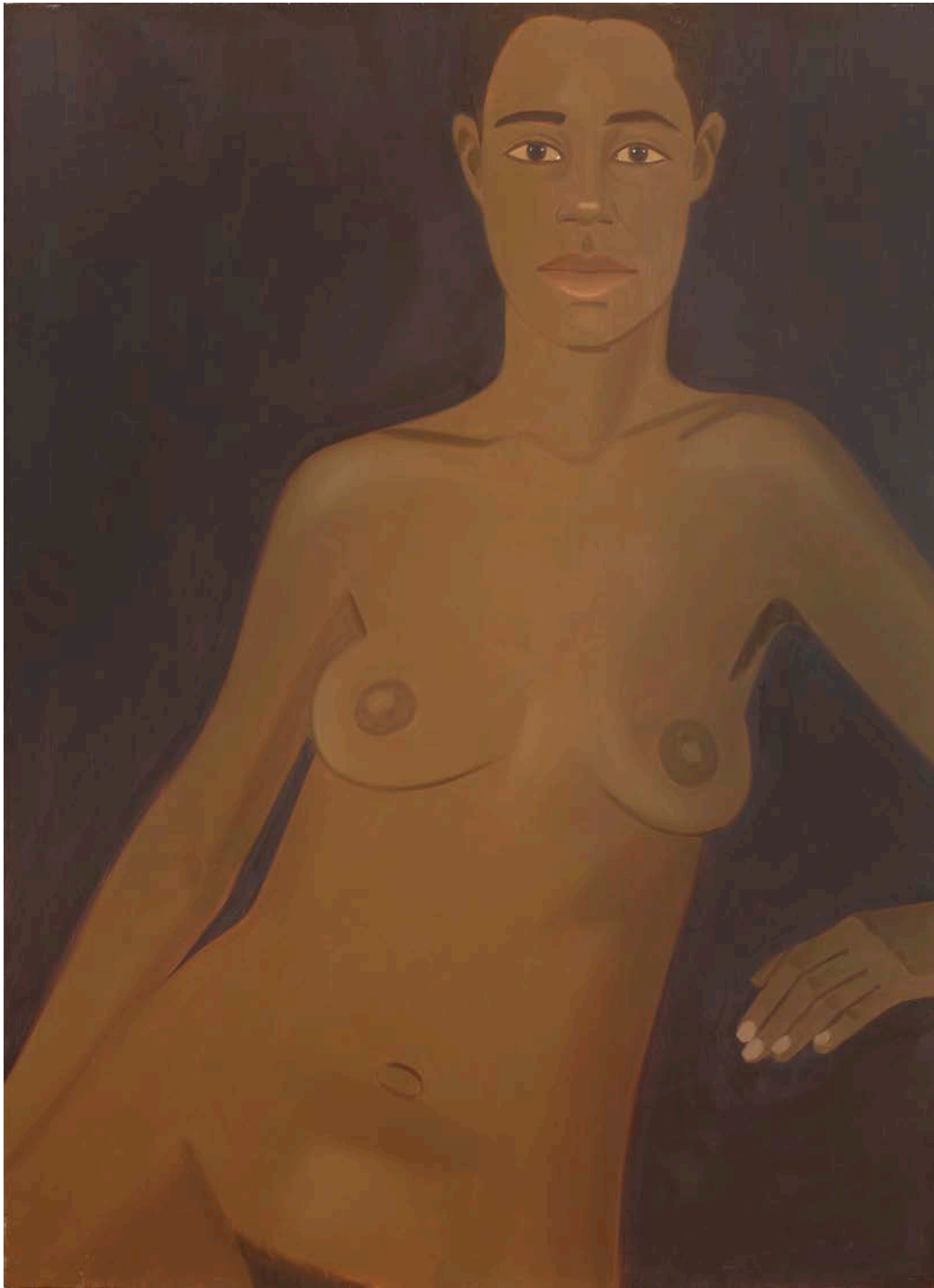
Lucian Freud
Woman with an Arm Tattoo, 1996
etching, edition of 40
plate: 23 1/4 x 32 in. / 59 x 81.2 cm
paper: 27 1/2 x 36 in. / 70 x 91.5 cm

Marlborough



Alex Katz
Ada Smiling, 1993
oil on canvas
60 x 48 in. / 152.4 x 121.9 cm

Marlborough



Alex Katz
Crolie, 1985
oil on canvas
66 x 48 in. / 167 x 122 cm

Marlborough



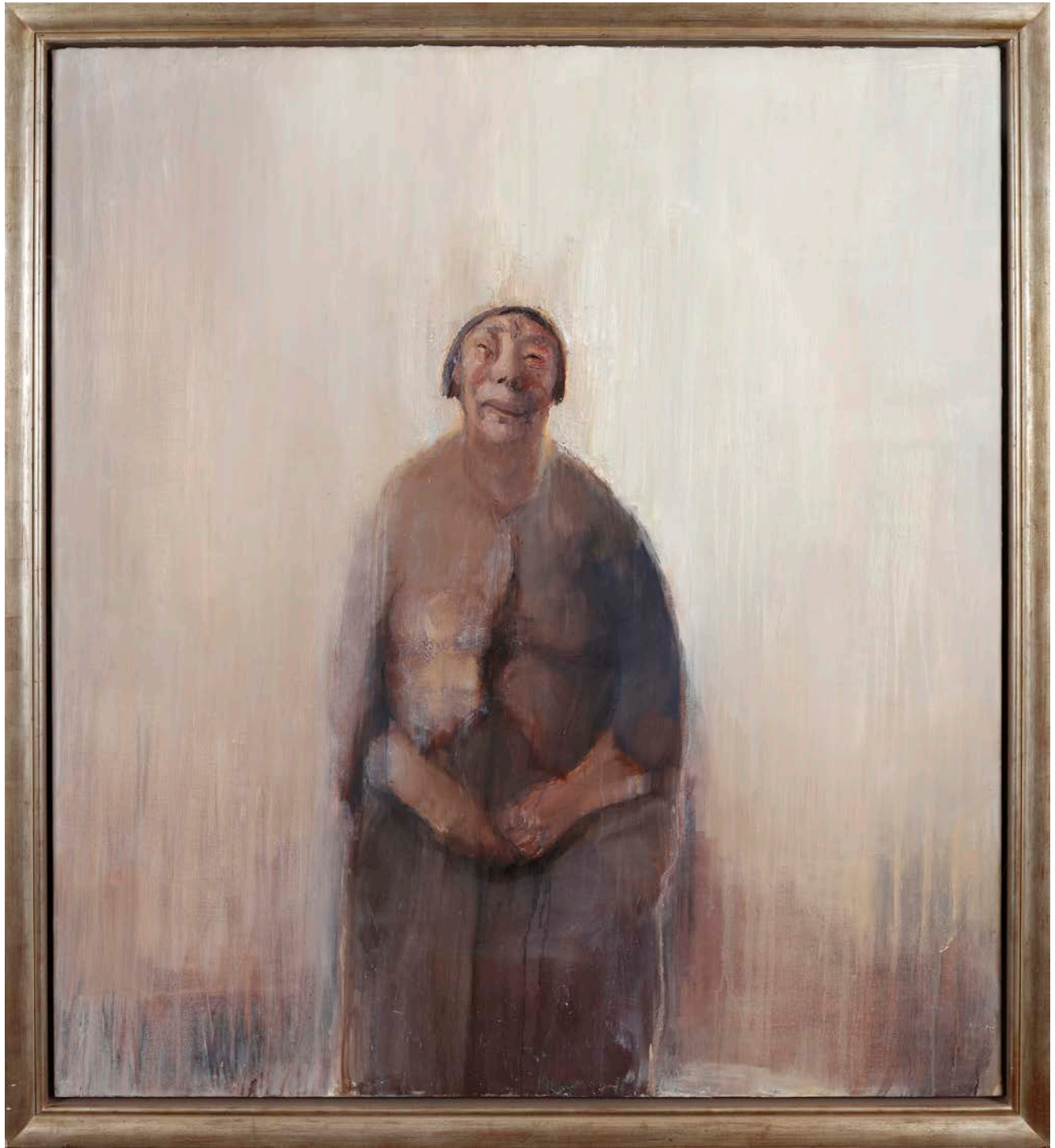
Alice Neel
Sam-War, 1941
oil on canvas
24 x 30 in. / 61 x 76.2 cm

Marlborough



Alice Neel
Steve Cornwell, 1976
oil on canvas
40 x 40 in. / 101.6 x 101.6 cm

Marlborough



Celia Paul
My Mother Looking Up, 1997
oil on canvas
60 x 54 in. / 152.4 x 137.1 cm

Marlborough



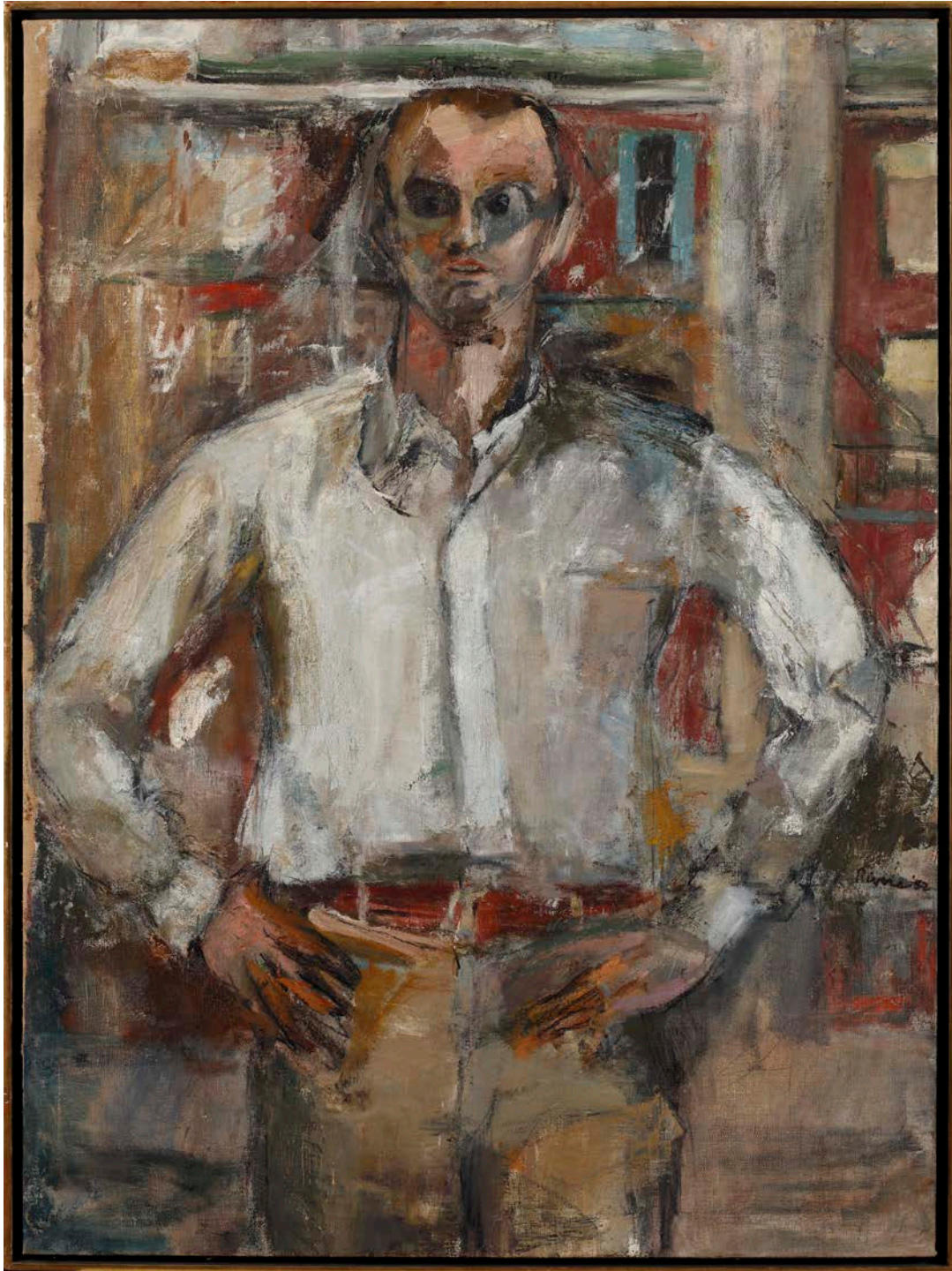
Paula Rego
Girl Reading, 2009
pastel, conté and charcoal on paper
48 x 30 1/4 in. / 112.1 x 76.8 cm

Marlborough



Paula Rego
The Old Republic, 2005
pastel on board
63 x 47 1/4 in. / 160 x 120 cm

Marlborough



Larry Rivers
Portrait of Frank O'Hara, 1953
oil on canvas
54 x 40 in. / 137.2 x 101.6 cm

Marlborough



Paula Rego
Night Bride, 2009
unique hand colored etching and aquatint
paper: 47 x 42 1/2 in. / 119.5 x 108 cm
plate: 36 5/8 x 33 5/8 in. / 93 x 85.5 cm

Marlborough



Paula Rego
Mother Loves You I, 2009
unique hand colored etching and aquatint
paper: 25 5/8 x 19 5/8 in. / 65 x 50 cm
plate: 19 1/2 x 14 5/8 in. / 49.5 x 37 cm

Marlborough



Paula Rego
Penetration, 2009-2010
unique hand colored etching, aquatint and spit-bite
paper: 16 7/8 x 20 1/2 in. / 43 x 52 cm
plate: 11 3/4 x 15 3/4 in. / 30 x 40 cm

Marlborough



Paula Rego
St. Christopher III, 2009-2010
unique hand colored etching and aquatint
paper: 26 x 20 1/8 in. / 65 x 51 cm
plate: 19 5/8 x 14 5/8 in. / 50 x 37 cm

Marlborough



Paula Rego
Haven I, 2009-2010
unique hand colored etching and aquatint
paper: 25 1/4 x 19 5/8 in. / 64 x 50 cm
plate: 15 3/4 x 12 in. / 40 x 30.5 cm

Marlborough



Paula Rego
Lamentation IV, 2009-2010
unique hand colored etching and aquatint
paper: 25 1/4 x 19 5/8 in. / 64 x 50 cm
plate: 19 1/2 x 14 5/8 in. / 49.5 x 37 cm

Marlborough



Paula Rego
The Tea Party II, 2009-2010
unique hand colored etching and aquatint
paper: 25 1/4 x 20 1/8 in. / 64 x 51 cm
plate: 19 5/8 x 14 5/8 in. / 50 x 37 cm

Marlborough



Paula Rego
Goat Girl, 2010
unique hand colored etching and aquatint
paper: 25 3/4 x 20 1/8 in. / 65.5 x 51 cm
plate: 19 1/2 x 14 3/4 in. / 49.5 x 37.5 cm

Marlborough



Paula Rego
Untitled, 2001
unique hand colored lithograph, artist's proof
paper: 26 x 15 3/4 in. / 66 x 40 cm
image: 19 7/8 x 10 in. / 50.5 x 25.5 cm